





Shows optional armchairs, see page 29

The Wimbledon

Settle into traditional tranquillity. Earthy tones with accents of yellow and orange, the vibe is bright without being brash. From chrome cup handles and pretty floral patterns, to delicate light fittings, every dainty detail adds up to one cute country stay.



Shows optional armchairs and optional front sliding doors, see page 29



A cosy, farmhouse feel

Please note: Some items featured in this photography are scene-setting props or optional extras, not included in your purchase. Please speak to your park or dealership or refer to the 'all this included' section for this holiday home.







Shows optional armchairs, see page 29

Highlights:

- Beautifully appointed shaker style kitchen
- Optional patio doors
- Updated colour scheme for 2024



Shows optional front French doors, see page 29

The Wimbledon

This cosy country feeling holiday home comes in three different layouts, so if you've fallen for its charms, simply pick the model that works for you.



360°

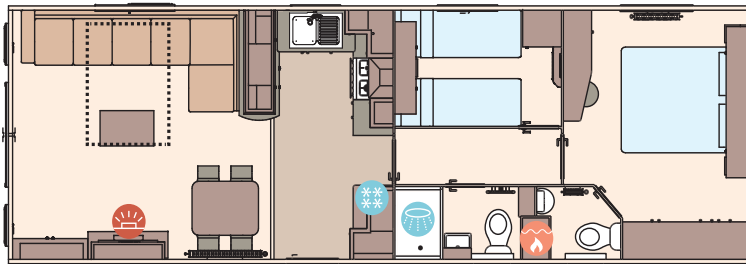
For more information and to take a virtual tour, visit www.abiuk.co.uk

All this included

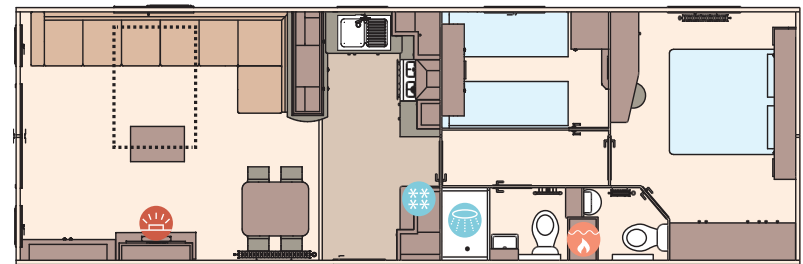
- ✓ Matt finish Champagne aluminium cladding
- ✓ Feature electric fire
- ✓ Carpet underlay throughout
- ✓ Stylish light fittings with low energy bulbs
- ✓ Free-standing dining table and chairs
- ✓ Externally vented powered cooker hood
- ✓ 40mm worktops
- ✓ Soft-close hinges on doors and drawers in kitchen
- ✓ Lift-up bed in master bedroom
- ✓ King size bed in master bedroom in all models
- ✓ TV point in master bedroom and one twin room
- ✓ USB sockets in all bedrooms
- ✓ USB socket in lounge
- ✓ Separate en suite toilet
- ✓ Shaver socket
- ✓ Bathroom extractor fans
- ✓ Coat hooks in all bathrooms
- ✓ Shaker style kitchen doors

Add any of these

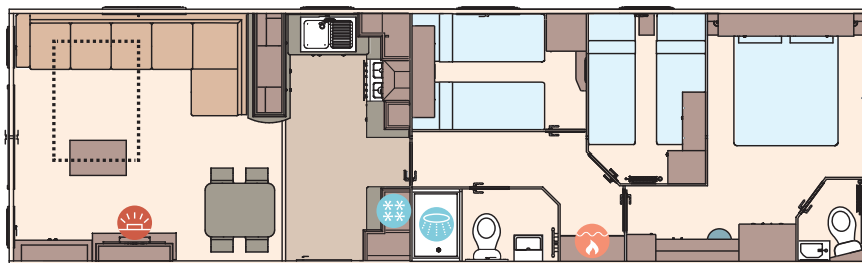
- Fully galvanised chassis
- 'Low E' PVCu Thermaglass double glazing
- Winter premium pack
- Winter electric pack
- Space saver bed for twin room
- Free-standing fridge
- Free-standing or integrated fridge freezer
- Integrated microwave oven
- 'Exclusive' pocket sprung mattresses
- Bluetooth sound system in lounge
- Scatter cushions in lounge
- Reduced L-shaped seating and additional two armchairs (38ft x 12ft 2 bedroom model only)
- Voiles throughout
- Plain duvet covers and pillowcases
- Exterior door options available



The Wimbledon 36ft x 12ft x 2 bedroom








The Wimbledon 38ft x 12ft x 2 bedroom



The Wimbledon 40ft x 12ft x 3 bedroom

KEY:

-  Fire
-  Water heater
-  Shower
-  Fridge/Freezer
-  Front pull out bed

OPTIONAL
WINTER
PACKS
See Page 86